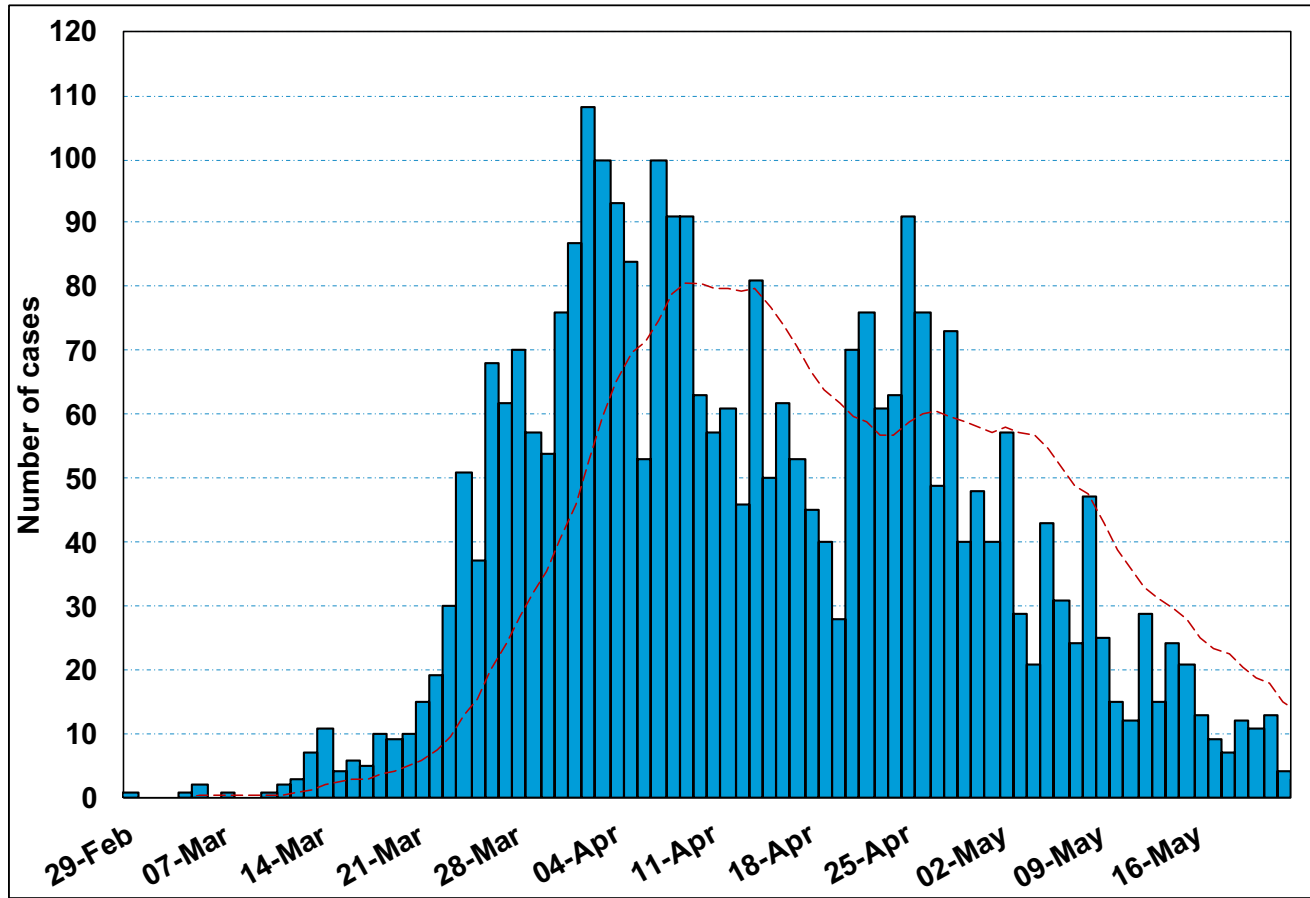


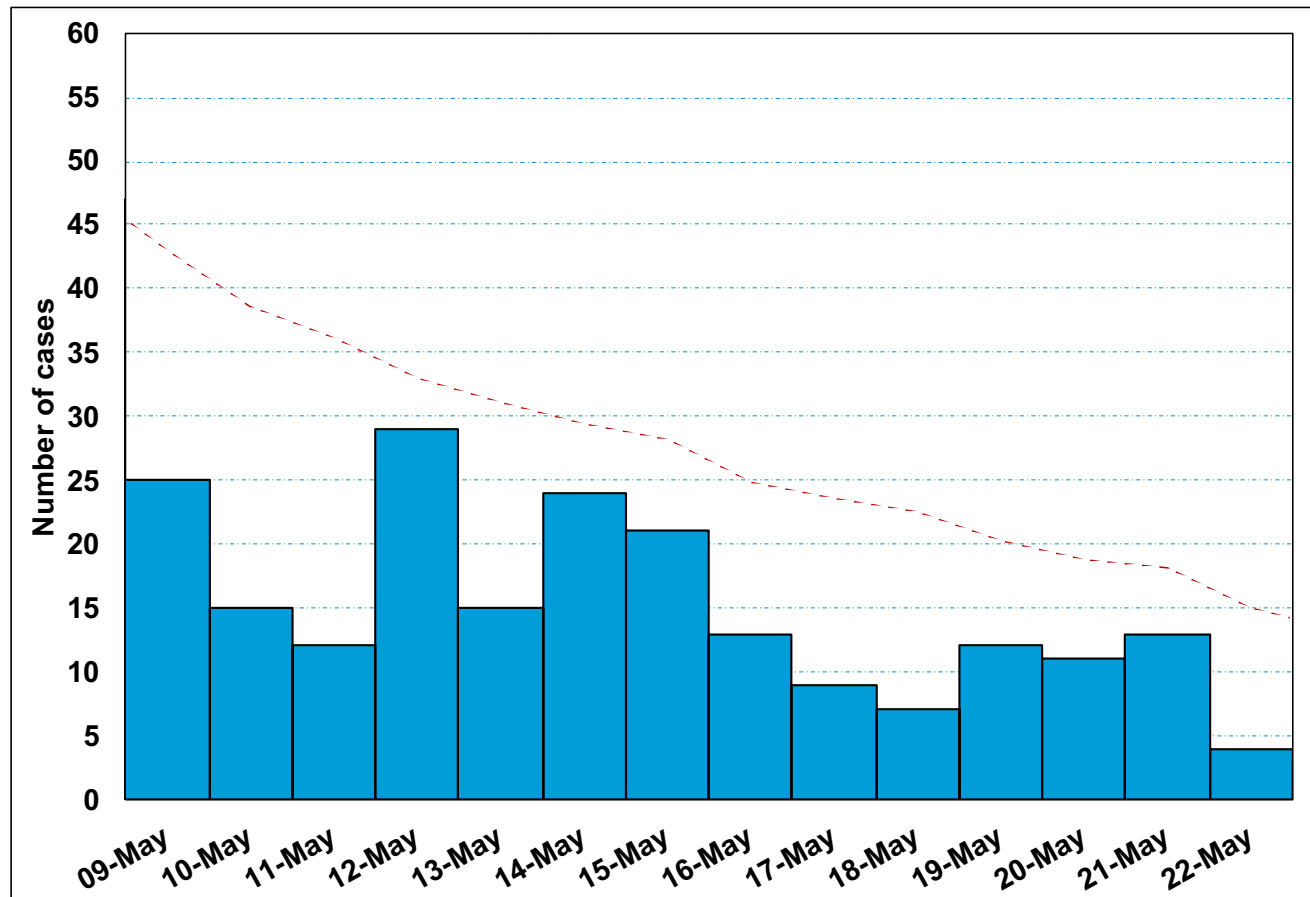
Essex

Daily Cases – 29th February to 22nd May



Essex

Daily Cases – 9th May to 22nd May



23/05/20

Facts & Figures – High House

Confirmed Cases	Local Population	Cases to Population %	Cases per 100,000 people
3,157	1,489,189	0.21%	212

- We appear to have peaked on the 2nd of April.
- Cases have dropped by 88% since the peak.
- In the last 14 days, we have experienced no more than 34 confirmed cases in a single day.
- On average, we are experiencing around 13 cases per day.